






Stripes Pipes Install Instructions

**Version 1.0
08-18-06**



Thank you for purchasing the mx5projects Greddy intercooler kit. Upon arrival, please check all components to insure you have a complete kit. Also, inspect all piping to insure they are clear of any debris before installation.

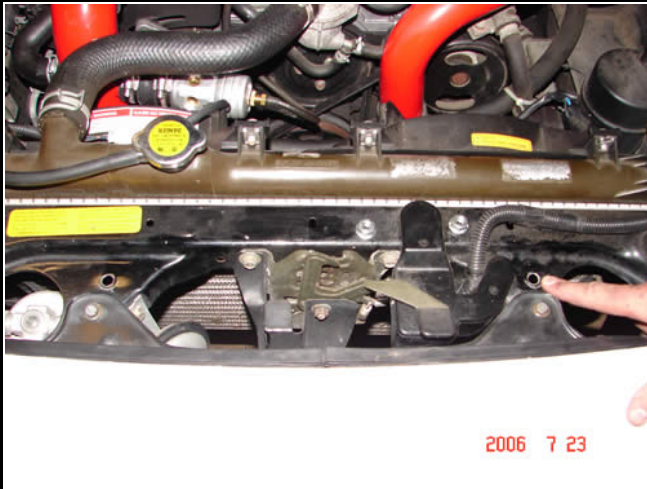
This kit includes:

<p>18x12x3 intercooler</p> 	<p>(6) intercooler pipes</p> 	<p>(4) 2.5 inch couplers (3) 2.0 inch couplers (1) 2.0-2.5 inch coupler</p> 
<p>(9) 2.5 inch t-bolt clamps (7) 2.0 inch t-bolt clamps</p> 	<p>Upper mounting bracket components</p> 	<p>Lower mounting bracket components</p> 
<p>(1) zip tie</p>		

Preliminary

1. Raise the front of your car to a comfortable and safe working height.

2. Remove the factory cross over pipe.
3. Remove the bottom plastic engine pan and the front plastic shroud.



Mounting the Intercooler

To the right of your hood latch there is a factory hole. Using a 3/8 drill bit, drill a larger hole.

If you have ABS, push aside your windshield washing container to access the hole.



14.5 inches from the center of the first bolt and parallel to the radiator, drill another hole. For accuracy, drill a smaller hole first and then use a larger drill bit.

Best way for now is to measure from the top of the cross beam to the center of the mounting bolt on the right side. Use the same measurement for the left hole....I need to update this section when I return.



If you have AC, reach up and carefully squeeze your ac dryer lines. This will allow the mounting bracket room for installation



Place the intercooler upright and attach the upper mounting bracket with the provided bolts. The top and bottom mounting bolts can be found on the intercooler.

This is the front side of the intercooler and mounting brackets.



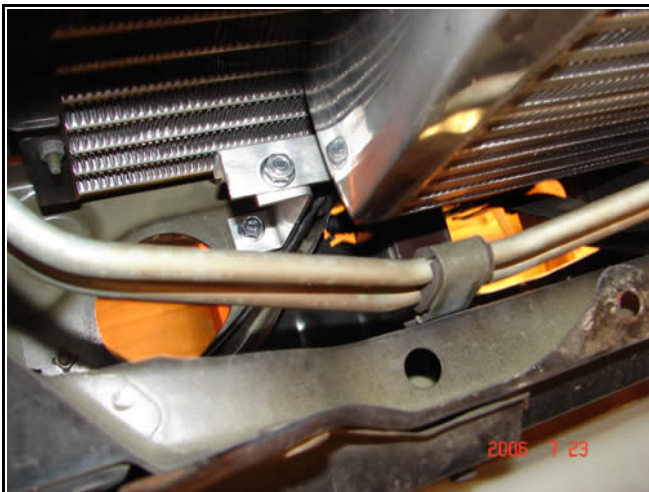
Remove the finishing bolt and washer and tighten the upper mounting bolt to the bracket on both sides.



If you have an extra set of hands great. Otherwise you can mount this intercooler fairly easy. From underneath, carefully guide the intercooler into place and gently slide the upper bolts through the holes you just drilled. It's helpful to place the washers and finishing bolt near the holes beforehand so you can easily bolt the intercooler into place



You may have to adjust the aluminum bracket a bit to get the bolts into the right location. Once they are in place, hand tighten each upper mounting bolt.



Before you tighten the upper mounting bolts, quickly check the intercooler to make sure it's not interfering with any other parts under you bumper.

After a satisfactory inspection, tighten the upper mounting bolts.



Installing the Bottom Brackets

From below, install the two bottom brackets.

First, remove the bottom two inner cooling fan shroud bolts. The bottom bracket will slide underneath the radiator fan shroud and the AC fan shroud. Remove each bolt. Be careful



Replace each bolt. Be careful not to over tighten the bolts.



There are two different aluminum bars that fit each side. Bolt the labeled bar to the correct side of the car.

Brad, this was what I was referring to when I mentioned you need to drill a hole to fit a mounting bracket. Mount the driver's side first (the right 1" aluminum bar) to position your intercooler from the radiator. Then fit the longer undrilled Aluminum bar to your intercooler and mark the location to where it meets your mounting bracket. Sorry about this. I need to get this measurement from Mach929.

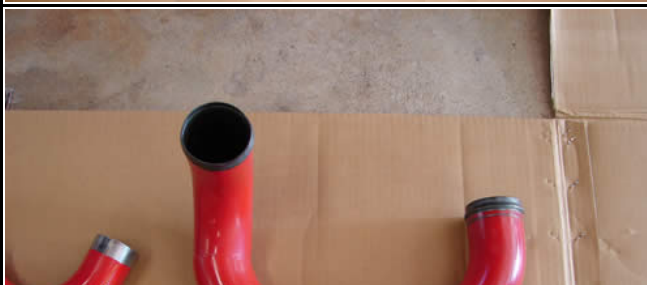




Your intercooler should be mounted and centered in your bumper bay.



Pipe installation



Start by attaching the bottom passenger side pipe to the intercooler. Use the provided 2.5 inch coupler and t-bolt clamps to attach to the intercooler. Tighten enough so the pipe stays in place, but do not completely tighten.



Attach the Throttle body pipe to the throttle body and attach it to the lower intercooler pipe. Use the provided 2.5 inch couplers and t-bolt clamps for each connection.

Before final tightening, adjust each pipe so there is enough material for the clamps to grab.

Attach the factory bypass valve to the nipple located left of the intake pipe.

Attach your BOV on the nipple to the right of the intake pipe.(not provided with kit)



Attach the driver side bottom pipe. The shorter side attaches to the intercooler



Next attach the lower L-shaped pipe to the pipe coming off the intercooler. The shorter side attached to the previous pipe. Use the 2.5-2.0 inch transition coupler for this connection.

This pipe should rest just left of the cooling fan motor.

From this point the intercooler pipe will be 2.0 inches.



Next install the pipe coming off the turbo. The longer side attaches to the turbo. Use the 2.0 inch couplers and 2.0 inch t-bolt clamp to mount this pipe.



Finally attach the other L-shaped pipe. The longer side attaches to the previous pipe.

Using the provided 2.0 inch coupler and t-bolt clamps, attach the two L-shaped pipes.



Now it is a matter of fine adjusting these pipes so they fit snug. Once you feel comfortable with the fitment, tighten all of your clamps.



The final touch is zip tying the driver's side pipe just left of the cooling fan motor. Apply the zip tie to the sway bar to ensure the pipe will not interfere with your AC and Powersteering belts. Cut off any excess zip tie material.



Congratulations! You just installed your own Stripes Pipes!

Testina Procedure:



1. **Drive locally until you are sure everything is installed correctly**
2. **Initially, bring along the appropriate size wrenches just in case you need to adjust a pipe away from home.**

Enjoy!