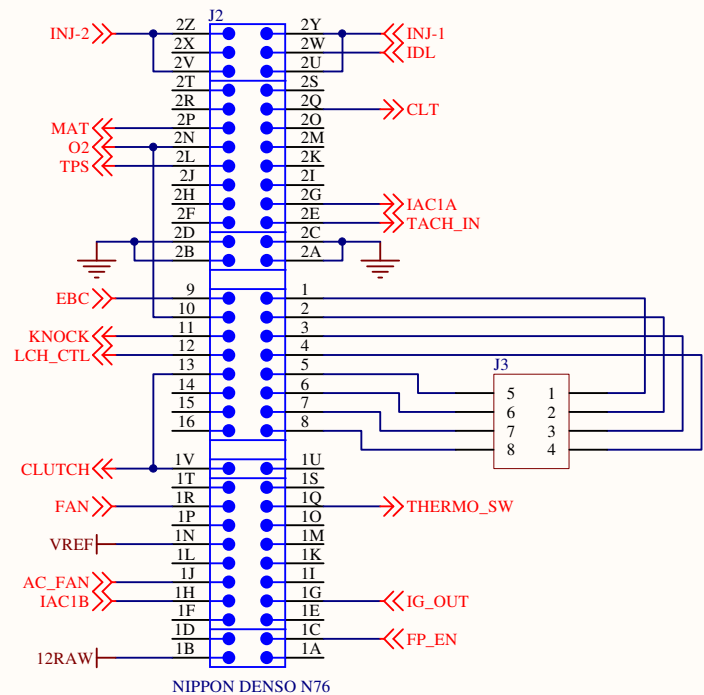


MM9093 DAUGHTERBOARD SCHEMATIC

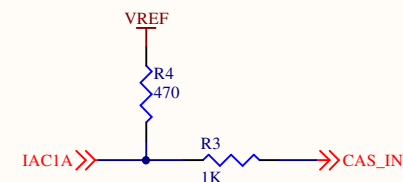
DISCLAIMER: This is NOT the official MM9093 schematic. This is a schematic I created after ohming out the PCB. It is for informational use only. Use at your own risk.

NOTE: The schematic includes the VTPS mod, which involves removing R6 and R7, connecting J2.1N to VREF (test point 26), and J2.2L to TPS (test point 22).

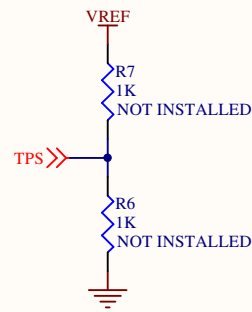
MM9093 HARNESS CONNECTOR



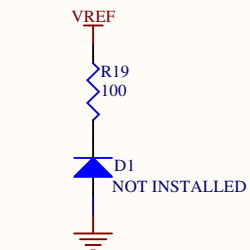
CAM ANGLE SENSOR



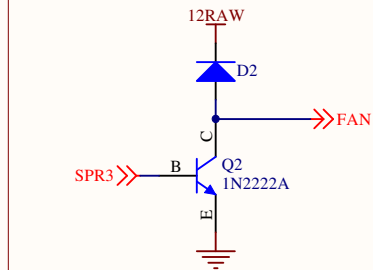
NOT USED WITH VTPS



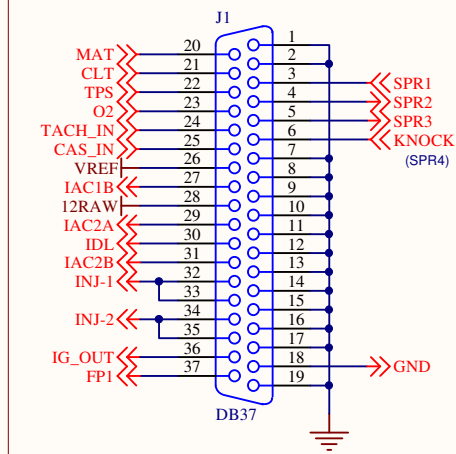
UNUSED DIODE



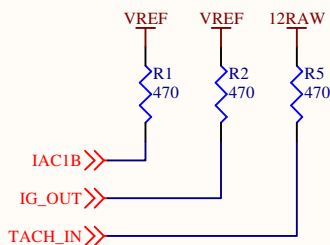
MAIN FAN CONTROL



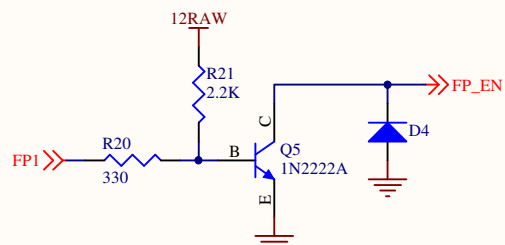
DB37 CONNECTOR



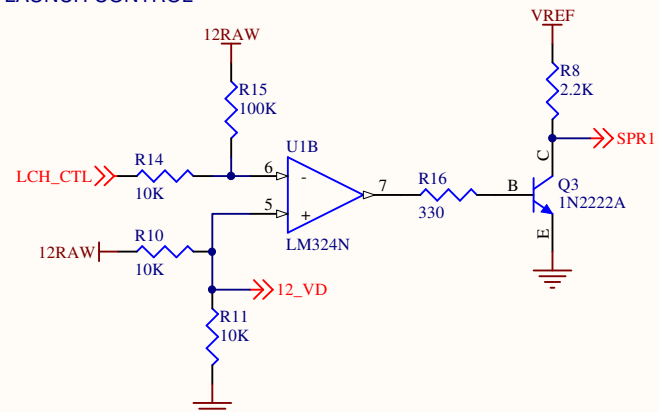
PULL-UPS



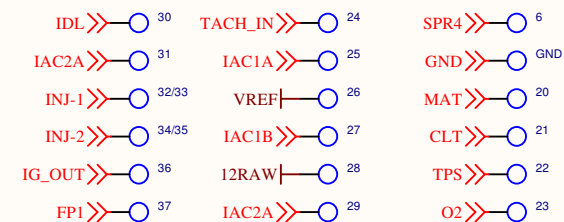
FUEL PUMP CONTROL



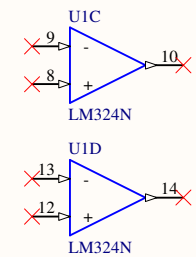
LAUNCH CONTROL



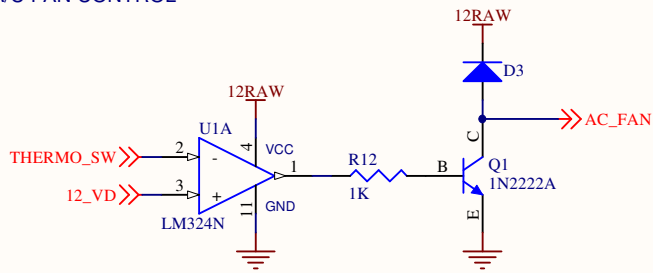
TEST POINTS



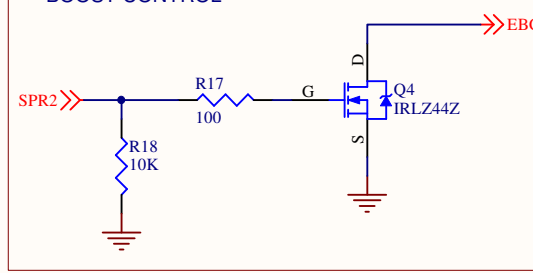
SPARES



A/C FAN CONTROL



BOOST CONTROL



Title MM9093 Daughterboard Schematic		
Size Legal	Number	Revision 1.0
Date: 9/7/2012	Sheet 1 of 1	
File: C:\Users\...MM9093_DB.SchDoc	Drawn By: GTLEE77	