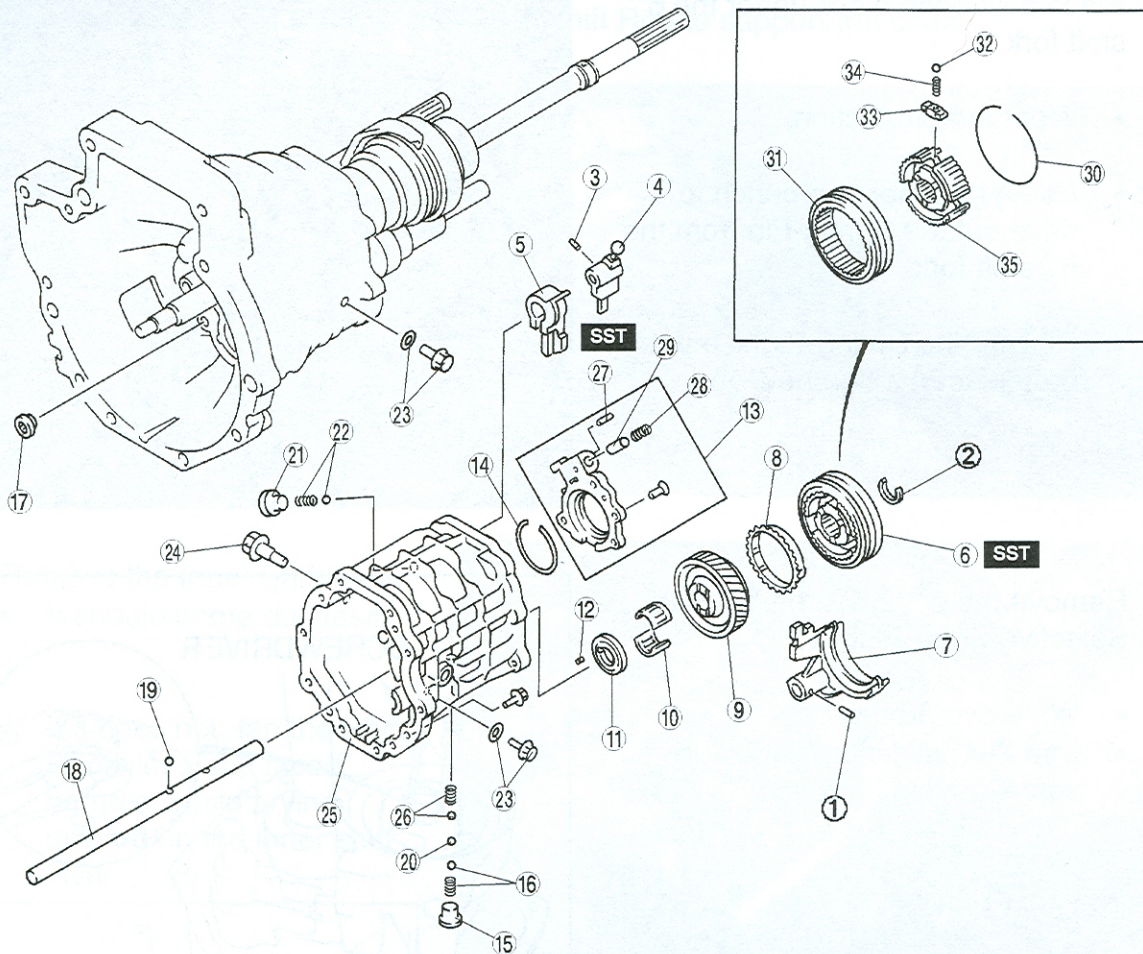


# Transmission Case and 6<sup>th</sup> Gear Disassembly

## Component Identification: Case and 6<sup>th</sup> Gear



Step #	Description	Step #	Description
1	Spring-Pin 6 <sup>th</sup> Shift Fork	19	Steel Detent Ball
2	Selective Snap-Ring (6 <sup>th</sup> Synchronizer Hub)	20	Steel Detent Ball
3	Spring Pin Inner Shift Lever	21	Plug
4	Inner Shift Lever	22	Long Pressure Spring & Small Steel Detent Ball
5	Interlock Sleeve	23	2-reverse Idler Shaft Bolts with Gaskets
6	6 <sup>th</sup> Clutch Hub	24	Bolt
7	6 <sup>th</sup> Shift Fork	25	Transmission Case
8	6 <sup>th</sup> Gear Synchronizer Ring	26	Short Pressure Spring and Steel Ball
9	6 <sup>th</sup> Gear	27	Spring Pin
10	6 <sup>th</sup> Gear Split Bearing	28	Pressure Spring
11	6 <sup>th</sup> Gear Thrust Washer	29	Push Pin
12	6 <sup>th</sup> Gear Thrust Washer Index Pin	30	Synchronizer Key Retaining Ring
13	Bearing Cover	31	6 <sup>th</sup> Clutch Hub Assembly
14	Mainshaft Rear Bearing Retainer Snap-Ring	32	Steel Ball (3)
15	Plug	33	Synchronizer Key (3)
16	Steel Ball and Short Pressure Spring	34	Synchronizer Key Spring (3)
17	Plug	35	6 <sup>th</sup> Clutch Hub
18	Shift Rod	---	---